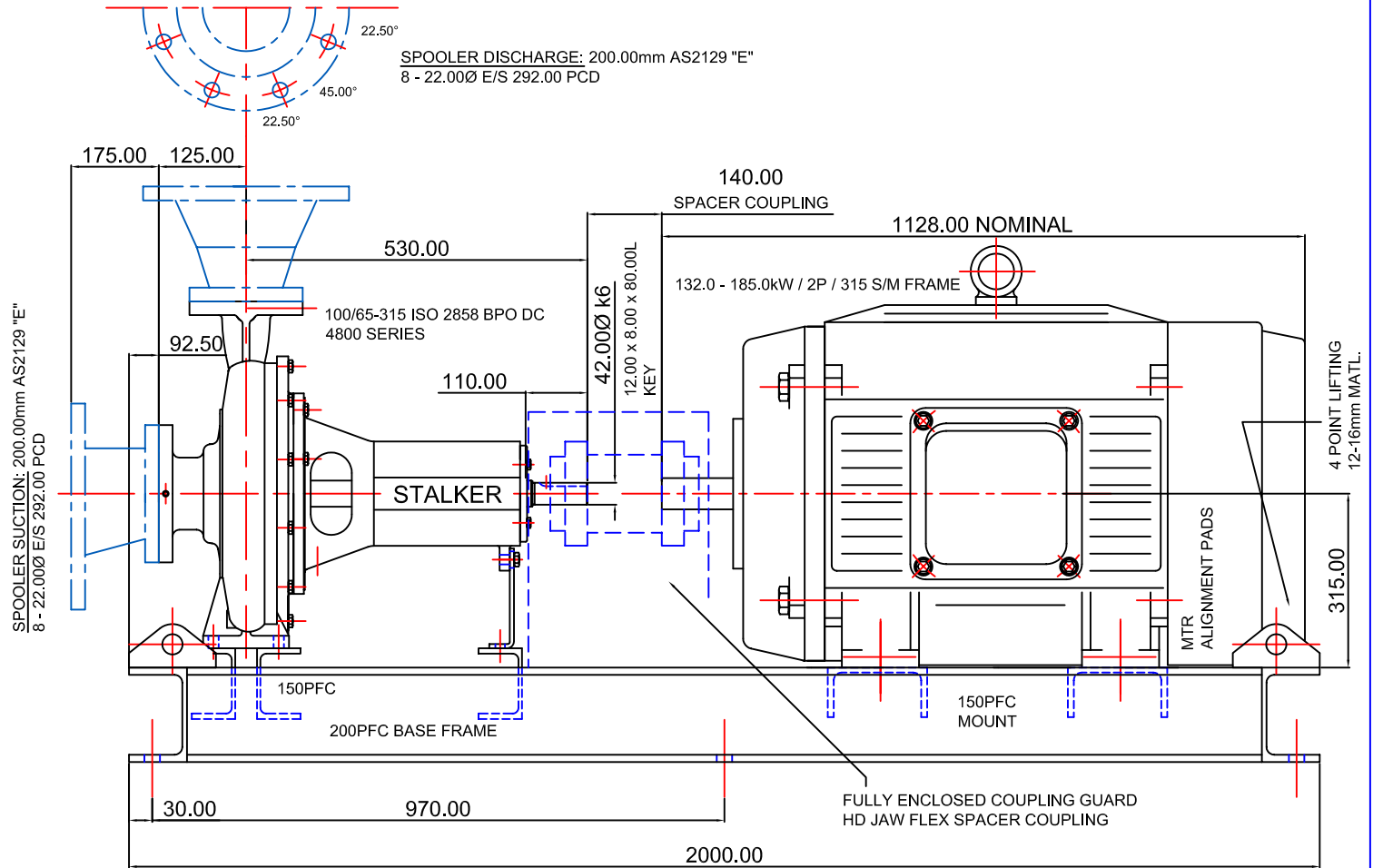
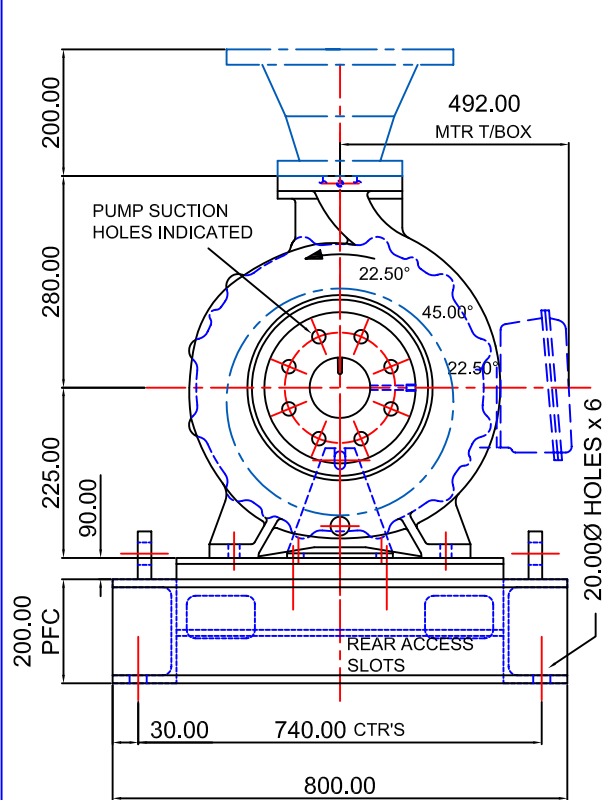


PUMP SUCTION: 100.00mm AS2129 "E" 8 - 18.00Ø E/S 178.00 PCD  
PUMP DISCHARGE: 65.00mm AS2129 "E" 4 - 18.00Ø E/S 127.00 PCD  
NOTE: SPOOLER ANGULAR HOLE POSTIONS TYPICAL FOR SUCTION  
AND DISCHARGE




**STANDARD DETAIL NOTES:**

THIS IS A DIAGRAMMATIC REPRESENTATION AND CERTAIN DETAILS REMOVED FOR CLARITY.

**IMPORTANT:** ALL DIMENSIONS INDICATED ARE NOMINAL.

**IMPORTANT:**  
THIS DATA IS RELEASED FOR  
REFERENCE ONLY.

|          |  |  |  |                               |   |  |
|----------|--|--|--|-------------------------------|---|--|
| REVISION |  | THIS DATA REMAINS THE PROPERTY OF STALKER ENGINEERING. NO DATA MAY BE REPRODUCED WITHOUT PRIOR CONSENT OF COMPANY. DATA MAY BE ALTERED WITHOUT NOTIFICATION. | GENERAL TOLERANCES<br>METRIC    +/-0.400mm<br>IMPERIAL +/-0.015" |                               | DRWN: AR  |  <b>STALKER PUMPS</b><br><a href="http://www.stalkerpumps.com.au">www.stalkerpumps.com.au</a> |
|          |  | AS1100 3rd ANGLE PROJECTION  | REFERENCE: ORIG FILE REF 08/10/2004, UPDATE 11/10/2004           | DATE: UPDATED 01/12/2005      | DIMENSION OUTLINE DIAGRAMMATIC<br>ISO 100/65-315 DC SPACER COUPLING<br>132.0 - 185.0kW 2P 315S/M BASE FRAME MOUNTED |  |
|          |  |  | DO NOT SCALE   | APPRVD:                       |   |  |
|          |  |  |  | FILE REF:<br>REFER DWG NUMBER | DRAWING No:<br><b>4800ISODCEM132-185kW2PBFDIMA3</b>   | <b>A3</b>  |